

MidSURE

IN-PERSON PRESENTATION GUIDE

IN-PERSON TIMELINE

REGISTRATION OPENS

Head to Spartan Experience Record to submit your information and let us know you're interested!

MAY 19

PRIORITY REGISTRATION CLOSÉS

Register before 6/18 to get top priority. Draft abstracts accepted

JUNE 18

LAST DAY TO UPDATE ABSTRACTS

Upload most updated abstract to SER (*mentor approval due 7/10*)

JULY 8

MidSURE

See you at the STEM Facility!

JULY 23

JULY 23: MidSURE DAY!

POSTER GUIDELINES

Printed size:

40" x 32"
(102 cm x 81 cm)

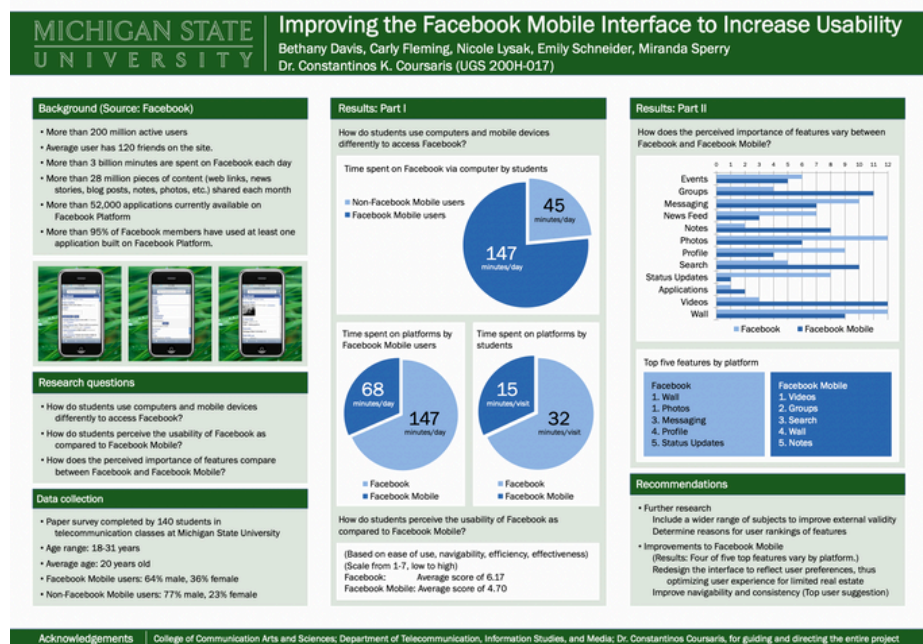
Orientation:

Landscape or portrait

Prepare a short pitch discussing the poster and your research

32"

40"



MidSURE

IN-PERSON PRESENTATION GUIDE

STEP-BY-STEP

REGISTER

- For priority consideration, register by 6/18/25 and begin drafting an abstract on ser.msu.edu
- Abstracts do NOT need to be completed to register
- **MSU Students:** Fill out the Undergraduate Research Experience module fields to document your research or creative work

FINALIZE

- Finish making revisions to your abstract by **7/8/25**
- Ask your mentor to review your submission by **7/10/25**
- Check your email for any additional requirements
- **MSU Students:** Complete [RCR training](#) by **7/10/25**

PREPARE

- Check your email for your assigned poster session time
- Coordinate with your group to share emailed updates/information as some emails may only go to the corresponding presenter
- Print the **40" x 32"** poster and practice your pitch
- Visit urca.msu.edu for helpful tips and resources

PRESENT

- Arrive at the STEM Facility 30 minutes before your poster session begins on **7/23/25**
- Be prepared to share your work and answer any questions on your research or creative activity
- Visit the Grad School Fair and engage with other presenters

FAQ

- **The status of my presentation says "Pending", what should I do?**
 - Please do NOT worry about the status as the status is for our office staff to organize presentations. If we need more information from you, we will reach out to you.
- **Can I only present posters?**
 - Yes. MidSURE only accepts research posters.
- **I'm not a student at MSU, how do I register on Spartan Experience Record (SER)?**
 - For a walkthrough on how to register through SER, visit urca.msu.edu/mid-sure
- **My research isn't completed yet, can I still participate?**
 - Yes! Research is a process and we welcome all stages. Just make sure your abstract is completed to the best of your ability by July 8th.
- **Do my mentors and co-presenters also need an account on Spartan Experience Record?**
 - If your mentor(s) or co-presenter(s) are not from MSU, they will need to [create an account](#). MSU students and mentors can use their NetID to log in.
- **I missed the registration deadline, can I still participate in MidSURE?**
 - Yes! You can still register after June 18th using the late registration link on urca.msu.edu/mid-sure/reg. You just may not get the first category or modality of your choice so register before June 18th to let us know you intend to present and to get top priority!